

120mm

The diagram shows a rectangular plate with a dashed border. Two vertical lines are drawn from the top edge to the bottom edge. The leftmost vertical line is labeled '120mm'. The second vertical line from the left is labeled '124mm'. At the bottom, two horizontal dimension lines are shown. The first horizontal dimension line, extending from the left edge to the second vertical line, is labeled '124mm'. The second horizontal dimension line, extending from the left edge to the right edge, is labeled '120mm'. The entire drawing is enclosed in a thick orange border.

124mm

124mm

120mm

120mm

A technical drawing of a square with a dashed border. The square is divided into four quadrants by a vertical line and a horizontal line. The vertical line is 120mm from the left edge, and the horizontal line is 120mm from the bottom edge. The distance from the vertical line to the right edge is 124mm, and the distance from the horizontal line to the top edge is 124mm. A large gray circled number '1' is centered in the square.

124mm

1

124mm

120mm

120mm

124mm

2

124mm

120mm

120mm

124mm

④

①

244mm

240mm

120mm

120mm

120mm

124mm

②

③

244mm

240mm

120mm

120mm

120mm

124mm

⑤

118mm

358mm

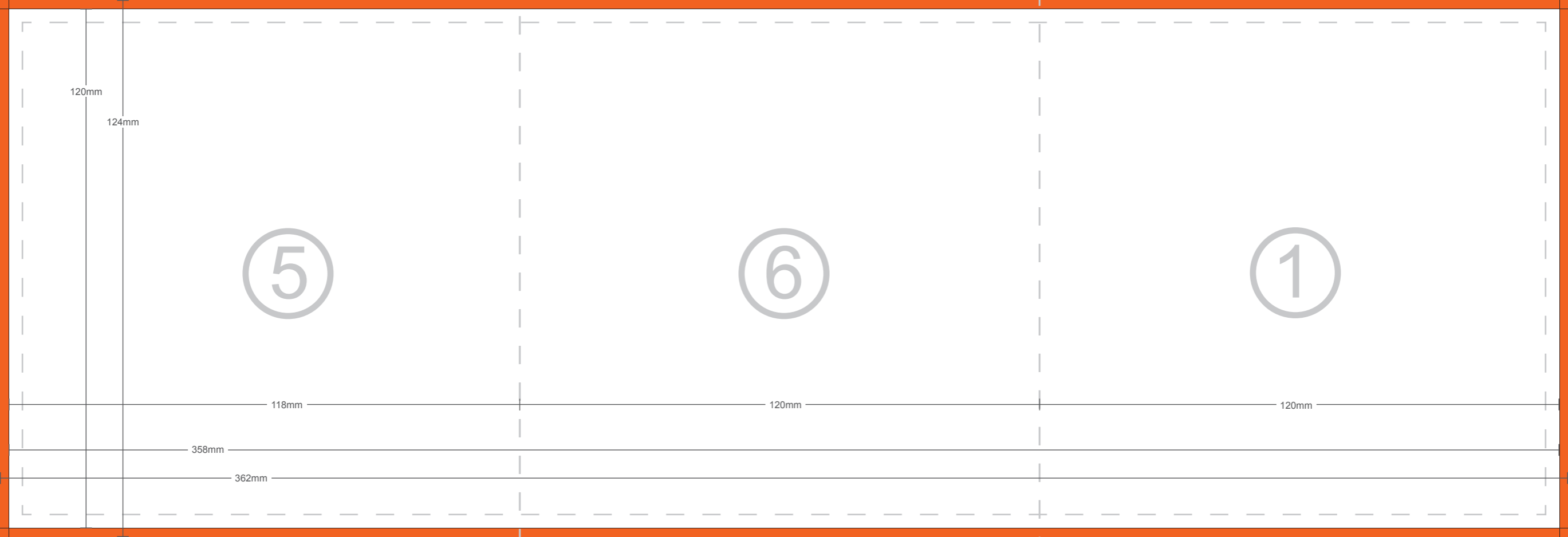
362mm

⑥

120mm

①

120mm



120mm

124mm

②

③

④

120mm

120mm

118mm

358mm

362mm

